

The logo for Edgewood Apartments features a stylized 'E' inside a circle, with horizontal lines above and below. Below this, the word 'EDGEWOOD' is written in a large, bold, serif font, and 'APARTMENTS' is written in a smaller, all-caps, sans-serif font below it.

EDGEWOOD
APARTMENTS

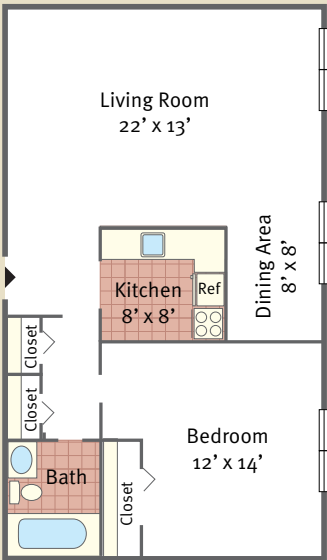


YOUR COMMUNITY, YOUR HOME!

Floorplans

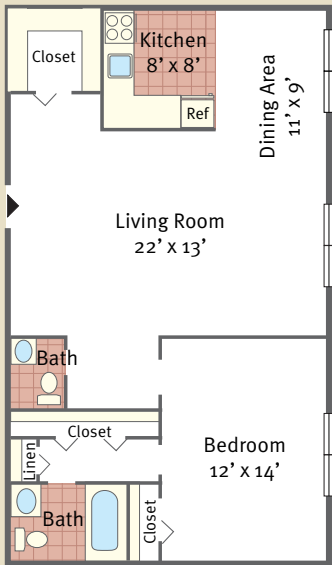
One Bedroom

835 Square Feet



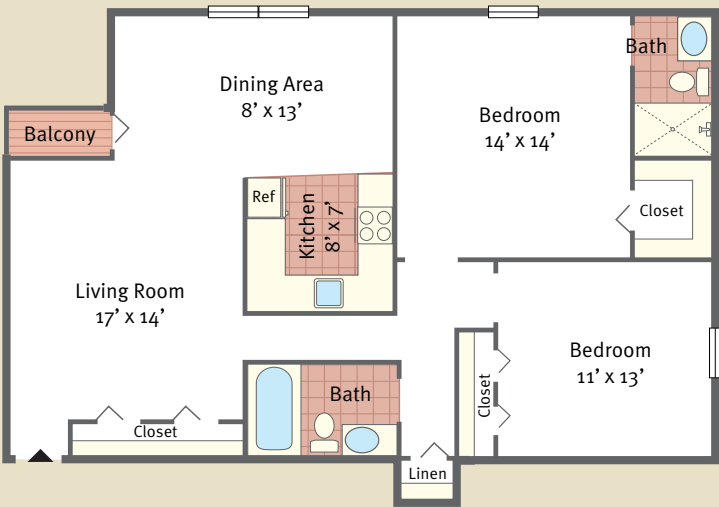
One Bedroom Deluxe

835 Square Feet



Two Bedroom

950 Square Feet



Floorplans not to scale. Details vary from residence to residence and are not necessarily built exactly as indicated above.

Edgewood Apartments

Edgewood Apartments is tucked away in the peaceful suburban town of Ambler. These lovely apartments offer large, airy floor plans with abundant closet space and your choice of balcony or patio in select apartments.

Apartment Features

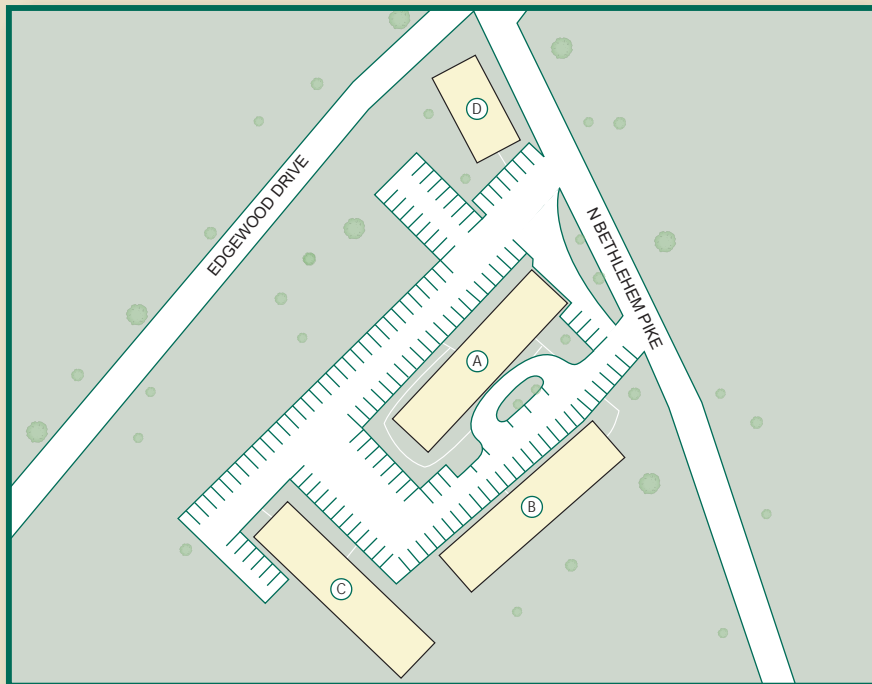
- Spacious 1, 2 & 3 bedroom apartments
- Fully equipped kitchens
- Air-conditioning
- Wall-to-wall carpeting
- Ample closet space
- Private balcony or patio available
- Cable ready
- High-speed Internet access
- FiOS access (TV/Internet/Phone)

Community Amenities

- Laundry facilities on-site
- Ample off-street parking
- 1/2 mile to Ambler Train Station
- 1/2 mile to Temple University - Ambler Campus
- Wissahickon School District
- 24-hour emergency maintenance
- Professional on-site management

Residents enjoy strolling along Main street downtown Ambler where they can enjoy stores and restaurants, art-house movies and live performances at the Ambler Theater. With easy access to the PA Turnpike, Route 309 and the Northeast Extension, Edgewood Apartments is an ideal location for living, working and playing.





Directions

From PA Turnpike: Take Exit 26 (Fort Washington). Bear right onto Pennsylvania Avenue, follow to dead end. Turn right onto Bethlehem Pike; follow 2 miles to Edgewood Apartments on the left.



Edgewood Apartments

150 N. Bethlehem Pike • Ambler, PA 19002

(p) 215.646.6016 • (f) 215.646.6118

edgewood@altmanco.com



WWW.ALTMANCO.COM