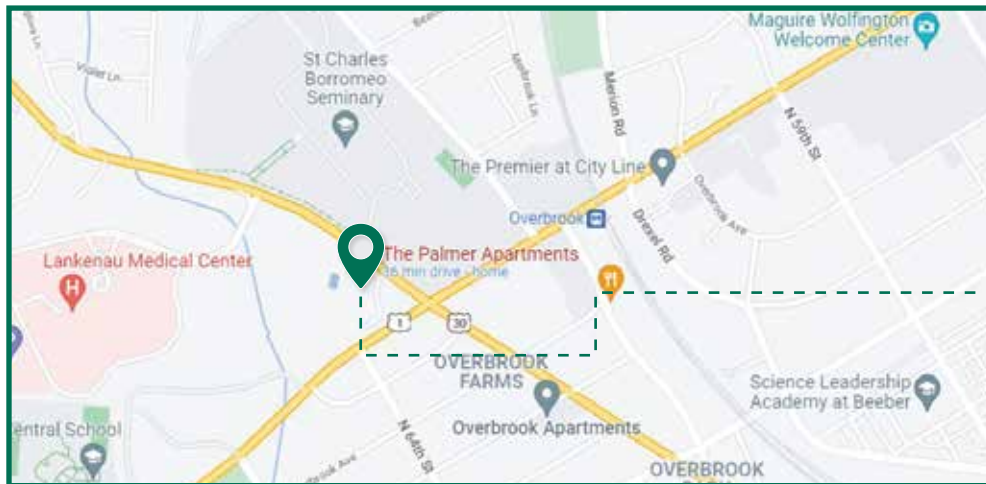


Community IS WHAT MAKES US



THE HOME OF YOUR DREAMS IS
one step away.



The Palmer

(p) 484.414.4282
thepalmer-leasing@altmanco.com

18 E Lancaster Avenue
Wynnewood, PA 19096



Your Community, *your home!*

Our Floor Plans



The Palmer offers spacious one, two and three bedroom apartments. A delightful community with a host of amenities awaits you. Professional management and maintenance staff ensure the care free lifestyle that you expect in apartment home living.

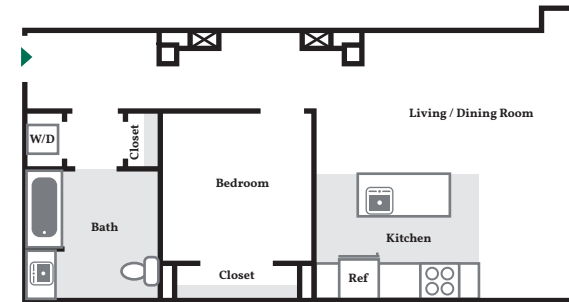
Apartment Features

- Unique floor plans
- Washer/dryer - in unit
- Air conditioning
- Balconies available in select homes
- Hardwood style flooring
- Slate tile baths with floating vanities
- Dishwasher
- Walk-in closets
- High speed internet access
- Window coverings

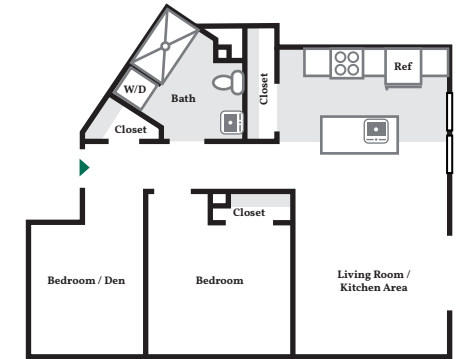
Community Amenities

- Historic building
- Library (rooms)
- Off-street parking
- Yoga/group exercise room
- Saltwater pool
- 24-hour fitness center

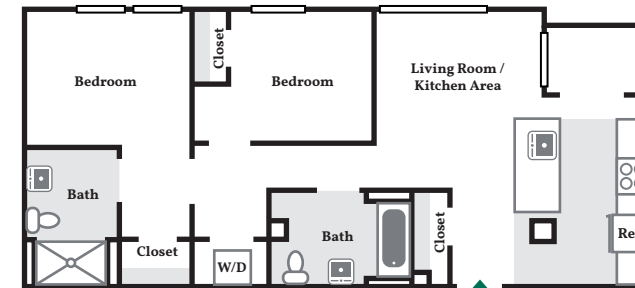
One Bedroom
670 Square Feet



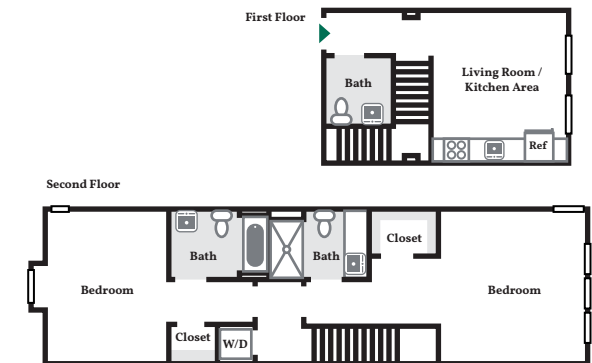
One Bedroom
820 Square Feet



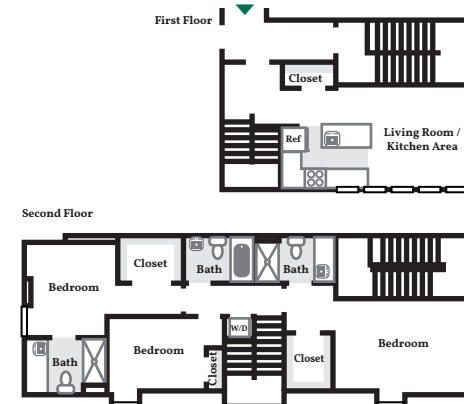
Two Bedroom
790 Square Feet



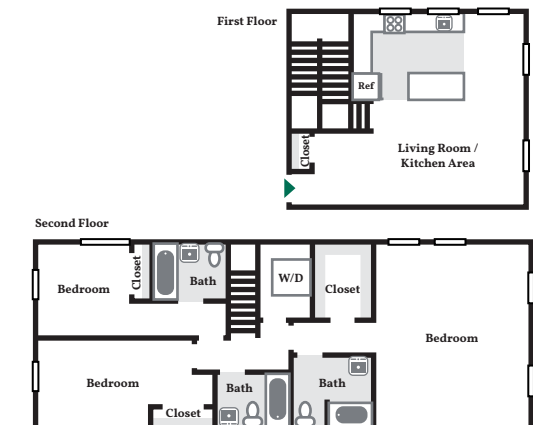
Two Bedroom
1035 Square Feet



Three Bedroom
1600 Square Feet



Three Bedroom
1930 Square Feet



Floor plans not to scale. Details vary from residence to residence and are not necessarily built exactly as indicated above.